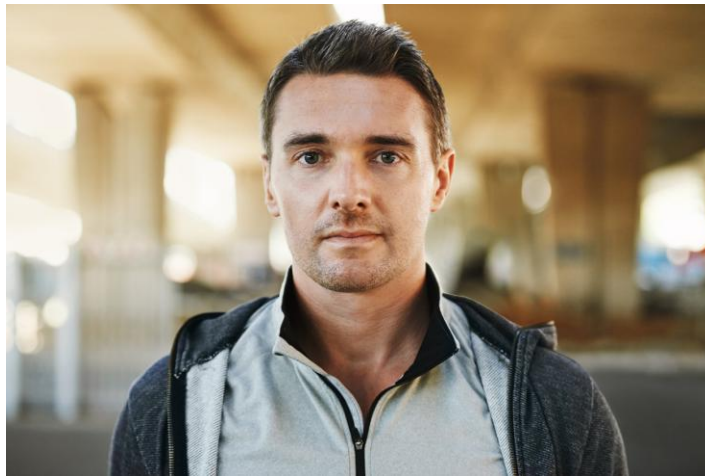


How Can Berxi Help Your Small Business Shift to a More Sustainable Model?



How Can Berxi Help Your Small Business Shift to a More Sustainable Model?

What does sustainability look like to you and your small business? For some, it may mean embracing more digital solutions, like e-billing, online appointment setting, and cloud-based recordkeeping. It may also mean using more energy-conscious electronics and sustainably sourced materials. It can also mean working with other companies that take a different approach to how they do business. Berxi is one company doing things differently. They're a direct-to-customer insurer. There are no brokers, no go-betweens, and less waste—less wasted time and resources. They've taken a more "online" approach to [insurance for nursing](#), dentists, and other professionals. How can they make a difference in your approach to business?



A More Direct Way of Doing Business

Part of shifting to a more sustainable model can come down to communication. The old-school way of communicating with clients, customers, patients, your community, and everyone else requires a lot of resources. With digital forms of communication, you can instantly communicate with your customers. Think about how much paperwork you would get from insurance companies in the past—even for the smallest things. Berxi meets a lot of businesses and professionals where they are with more direct forms of communication. If you have questions or need to talk to a real person about your nursing insurance (plus, someone who knows the "fine print"), you can email or call them. Or you can just sign into your account if you need your documentation, which is all digital.

Less Waste, Improved Access

Waste comes in all forms. In terms of sustainability, there are wasted resources, like paper and electricity. But there's also wasted time, money, and effort. When you're running your business, all forms of waste can get in the way of what really matters, that being your focus on the business itself, along with your clients or patients. Berxi can help you achieve less waste.

Yes, being easily accessible online can mean less paper waste, along with the ripple effect of less waste getting to your door, but it can also mean less wasted time, money, and effort. Since Berxi offers dental and [nursing insurance](#), along with other forms of professional insurance, directly, you don't have to run around trying to get ahold of the right person who can handle your issue. There's a simplicity to it—a simplicity that can result in less waste and improved access.

Ideas Worth Emulating

You may do business with Berxi. They may be your provider for [liability insurance for counselors](#) or errors and omissions coverage for those in real estate or IT. But why not also take inspiration from the other businesses you work with? This is a tip for any business, small, medium, or large, or in any industry. What do your other B2B partners do “right” that you can put to work for your own business? Maybe it's the way you interact with customers. Maybe it's cutting through the clutter and going digital in your marketing and operations. There are a lot of ideas worth emulating—and you may find inspiration for the next chapter of your business.

Find a new way to shop for professional insurance at <https://www.berxi.com/>

Original Source: <https://bit.ly/3rtGSRT>



SMALL BUSINESS
POSSIBILITIES